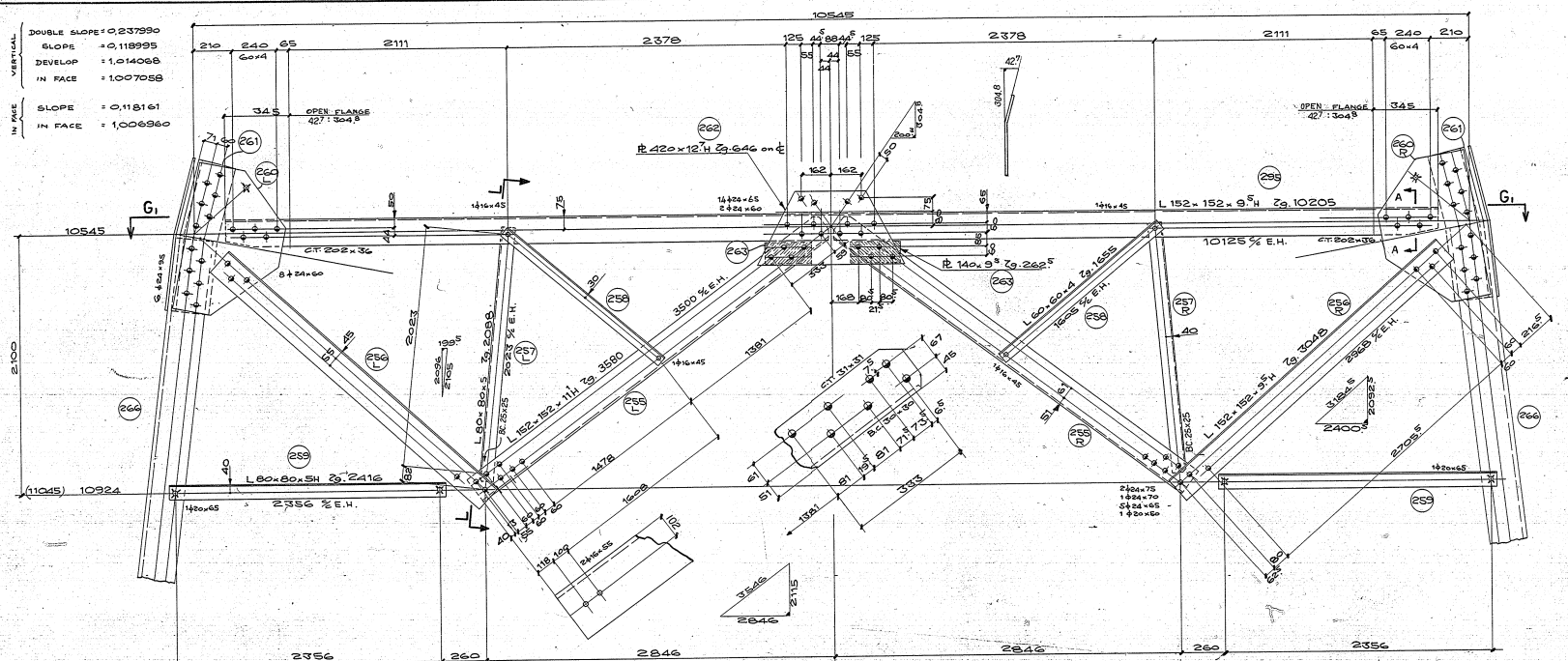
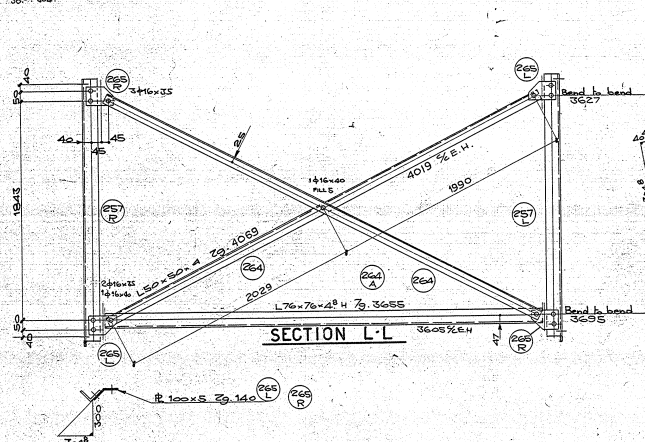
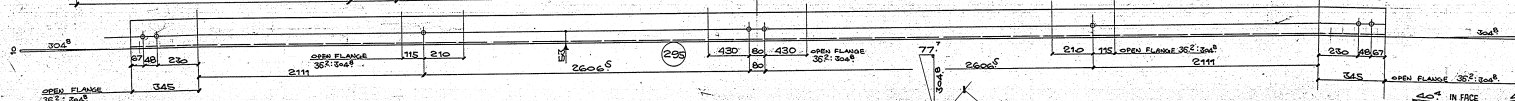
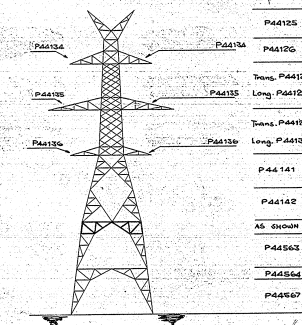
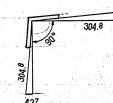


VERTICAL	DOUBLE SLOPE	= 0,237990
	SLOPE	= 0,118995
	DEVELOP	= 1,014068
	IN FACE	= 1,007058
N FACE	SLOPE	= 0,118161
	IN FACE	= 1,006960

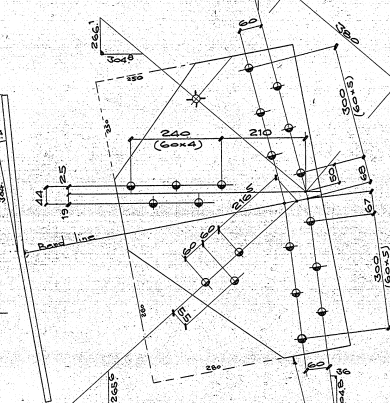


BOLTS	N ^o
+ 16 x 35	40
+ 16 x 40	12
+ 16 x 45	16
+ 16 x 55	16
+ 20 x 50	8
+ 20 x 65	8
+ 24 x 60	72
+ 24 x 65	96
+ 24 x 70	8
+ 24 x 75	16
+ 24 x 95	48

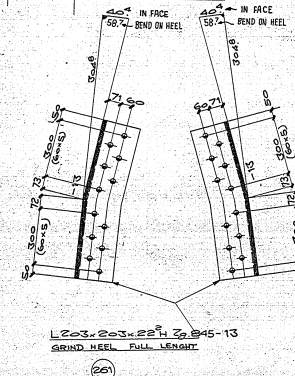
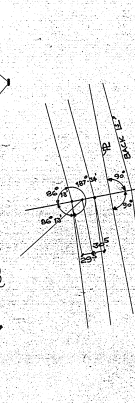
SECTION A-A



SECTION L-L



Φ 520×12⁷ H Zg. 81C



L203x203x22³H Zg. 845-1
GRIND HEEL FULL LENGTH

± NOTES -

1. For general notes, see dwg. P44125.-
2. Ø = 17 mm dia holes for 16 mm dia bolts, cut edge 25 mm, unless noted.
3. X = 21 mm dia holes for 20 mm dia bolts, cut edge 30 mm.
4. Ø = 26 mm dia holes for 24 mm dia bolts, cut edge 40 mm.
5. For section G1-G2, see dwg. 44555

ΙΔΙΟΚΤΗΣΙΑ ΔΕΗ

D.D. 1065

0

[illegible]